

Sunuprise Technology Ltd

10/100Base SMD Transformer

Part Number: S16A12M

Page:1/1

- Compliant with IEEE 802.3 standard.
- RoHS compliant.
- Operating temperature range : -40°C to +85°C.
- Storage temperature range: -40 °C to +125°C

Electrical Specifications @ 25°C

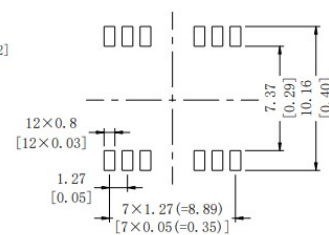
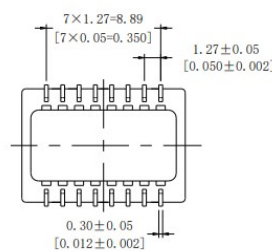
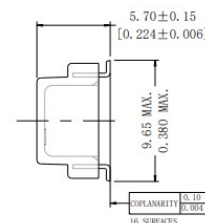
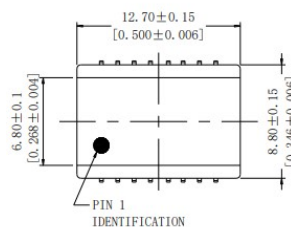
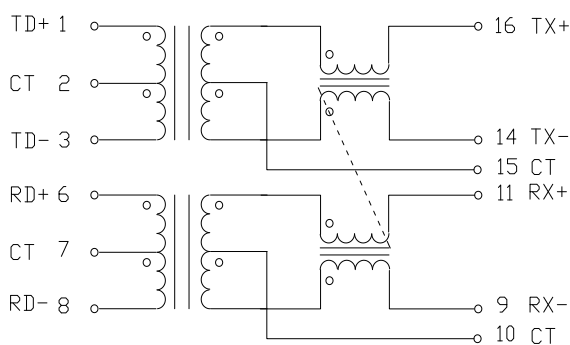
Part Number	Turns Ratio (±5%)		OCL(μH Min) @100KHz/0.1V with 8.0mA DC	Insertion Loss (dB Max) 0.3-100MHz	HI-POT (Vrms)
	TX	RX			
S16A12M	1CT:1CT	1CT:1CT	350	-1.15	1500

Continue

Part Number	Return Loss (dB Min)			Cross Talk (dB Min)		DCMR (dB Min)		
	30MHz	60MHz	80MHz	1-60 MHz	60-100MHz	30 MHz	60 MHz	100MHz
S16A12M	-18	-14	-12	-45	-35	-40	-35	-30

Schematics:

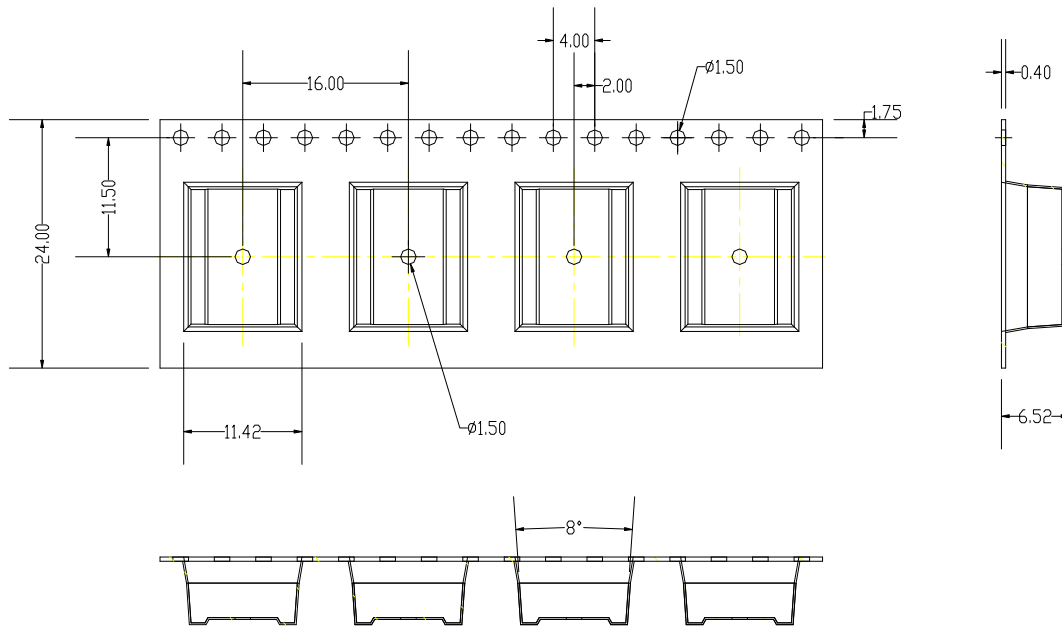
Mechanicals:



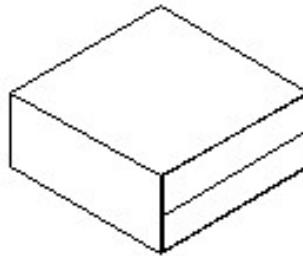
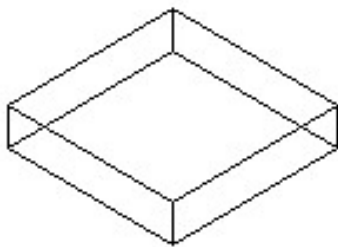
R0(07/12)

Tel: +86-816-5019526/0-18508164900 E-mail: Johnhubei@163.com

Sunuprise Technology Ltd

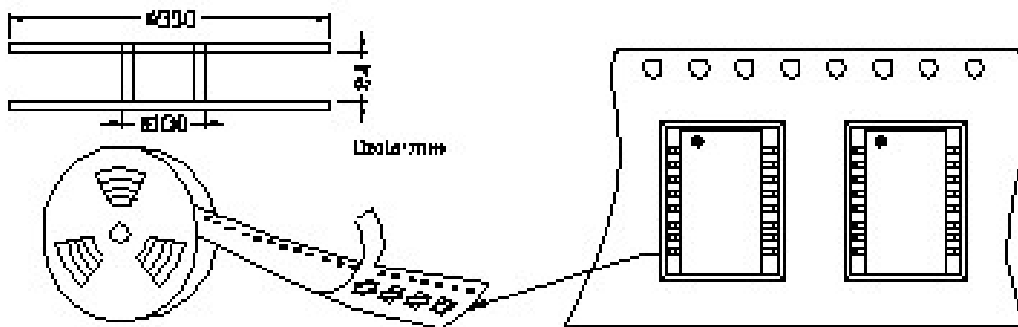


REEL MECHANICAL DIMENSION



INNER CARTON: 340mm(L) × 340mm(W) × 100mm(H)

EXPORT CARTON: 360mm(L) × 360mm(W) × 250mm(H)



- 1、 ONE ROLL: 600PCS
- 2、 INNER CARTON: 1800PCS
- 3、 EXPORT CARTON: 3600PCS

Tel: +86-816-5019526/0-18508164900 E-mail: Johnhubei@163.com