

# Sunuprise Technology Ltd.

## 10/100Base SMD Transformer

PartNumber: S40005

Page:1/2

- Compliant with IEEE 802.3 standard,
- RoHS compliant.
- Operating temperature range : 0°C to +70°C.
- Storage temperature range: -20°C to +125°C

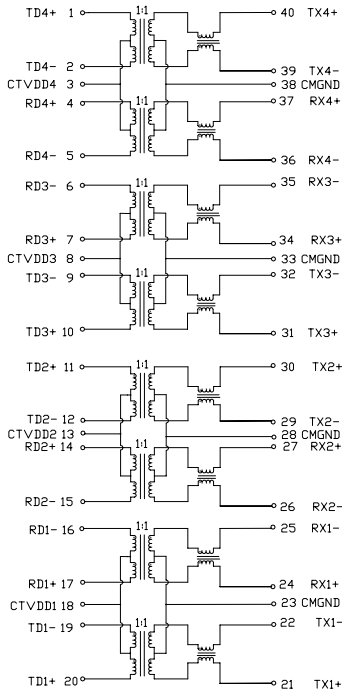
### Electrical Specifications @ 25°C

Part Number	Turns Ratio (±5%)		OCL(uH Min) @100KHz/0.1V with 8.0mA DC	Insertion Loss (dB Max) 1-100MHz	HI-POT (Vrms) 1500
	TX	RX			
S40005	1CT:1CT	1CT:1CT	350	-1.15	1500

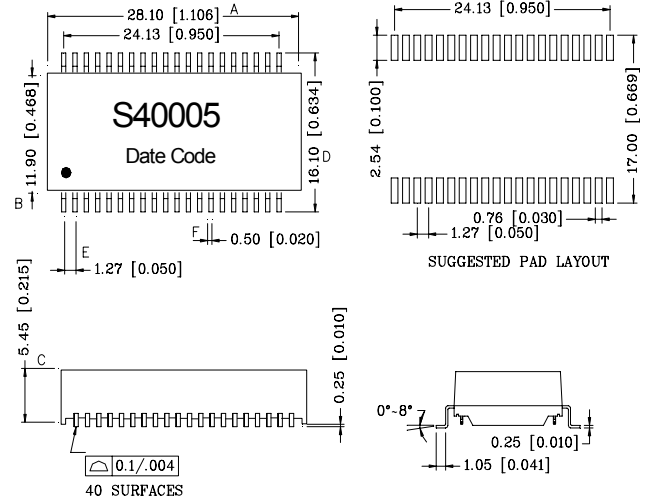
### Continue

Part Number	Return Loss (dB Min)			Cross Talk (dB Min)		DCMR (dB Min)	
	1-30MHz	30-60 MHz	60-80 MHz	1-60 MHz	60-100 MHz	1-60 MHz	60-100 MHz
S40005	-18	-14	-12	-45	-35	-37	-28

### Schematics:



### Mechanicals:



Unless otherwise specified, all tolerances are mm (inch)  
 XX.XX ± 0.25 (0.01) 0.XX ± 0.05 (0.002)

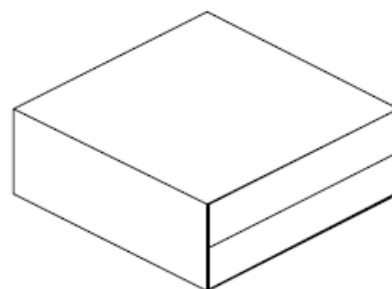
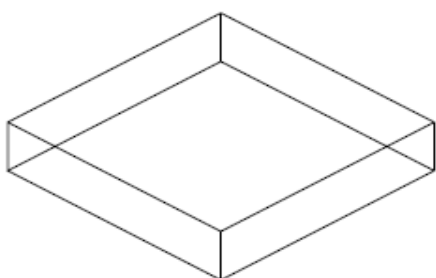
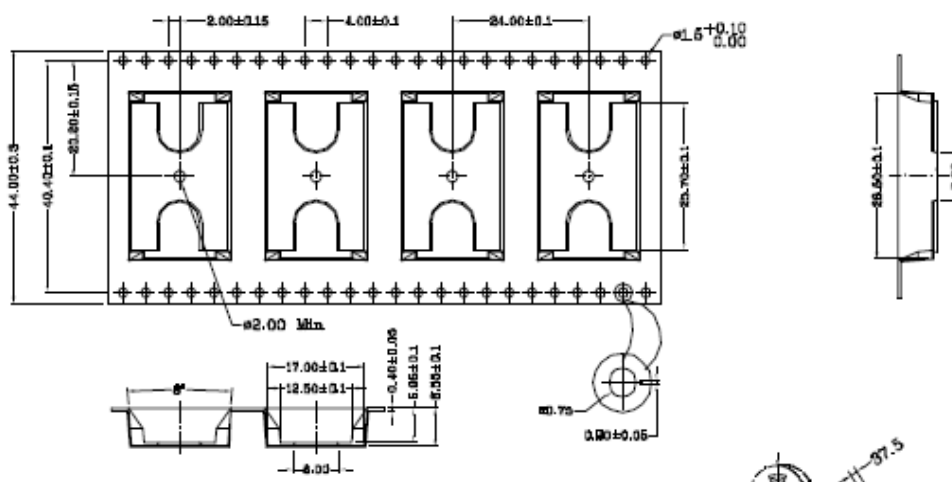
R0(07/12)

# Sunuprise Technology Ltd.

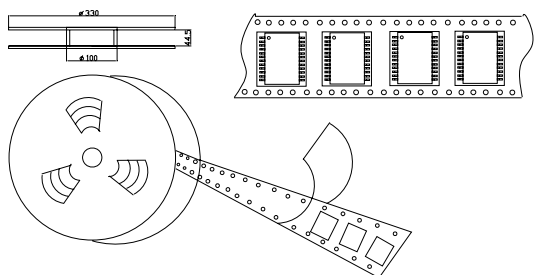
10/100Base SMD Transformer

Part Number: S40005

Page:2/2



INNER CARTON:350mm(L)\*350mm(W)\*115mm(H) EXPORT CARTON:360mm(L)\*360mm(W)\*450mm(H)



- 1、 ONE ROLL: 400PCS
- 2、 TWO ROLL BOX: 800PCS
- 3、 TWO BOX CARTON: 2400PCS

Tel: +86-816-5019526/0-18508164900 E-mail: Johnhubei@163.com